



StPetri
lutheran church

BUILDING TO SERVE
OUR COMMUNITY

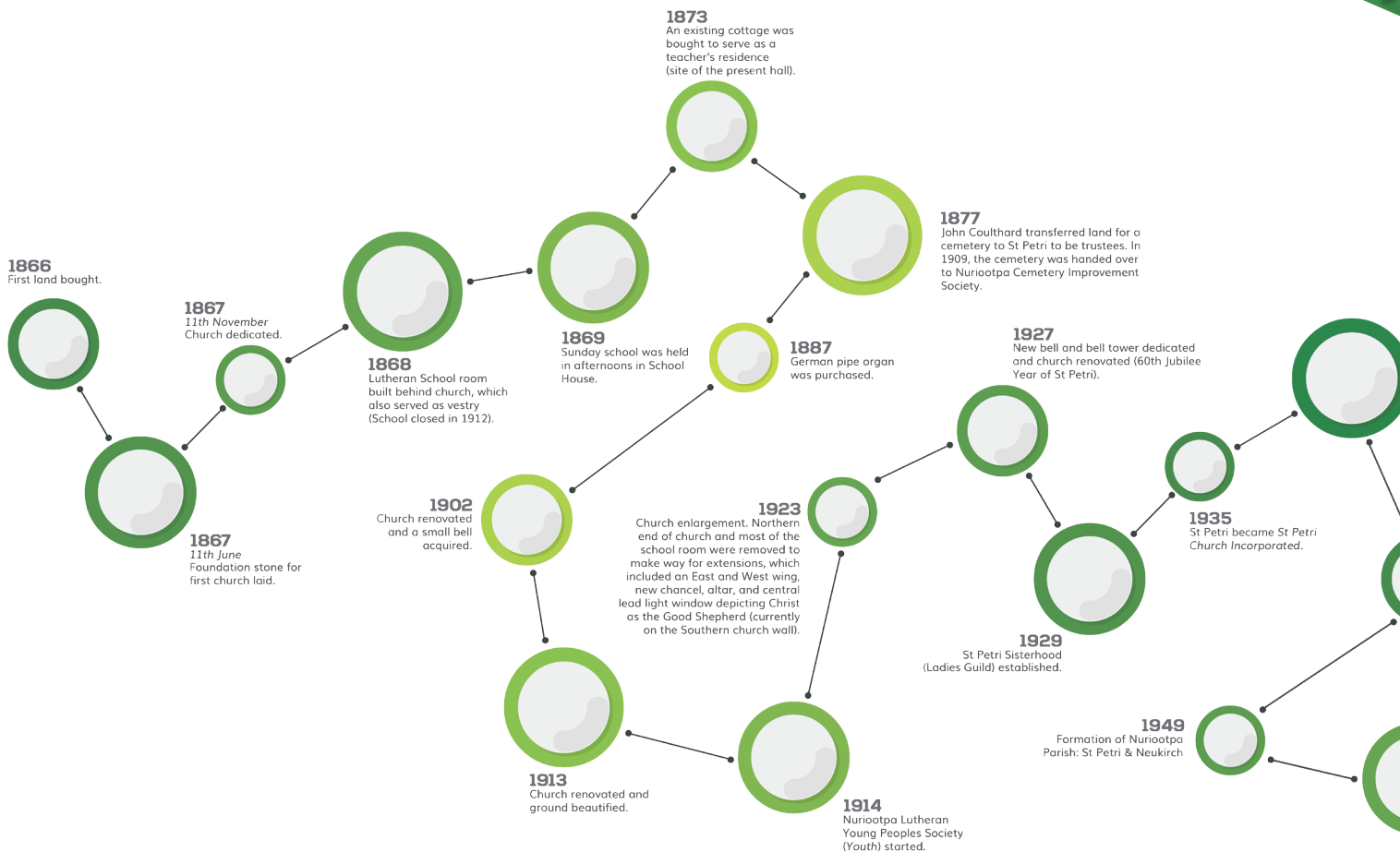
It's never been about the buildings, because buildings don't bring a *life with Christ* to people, but **what happens in them can and does.**



04	PAGE 01
08	PAGE 02
10	PAGE 03
14	PAGE 04
18	PAGE 05
22	PAGE 06
24	PAGE 07
28	PAGE 08
04	PAGE 09
08	PAGE 10
10	PAGE 11
14	PAGE 12
18	PAGE 13
22	PAGE 14
24	PAGE 15
28	PAGE 16

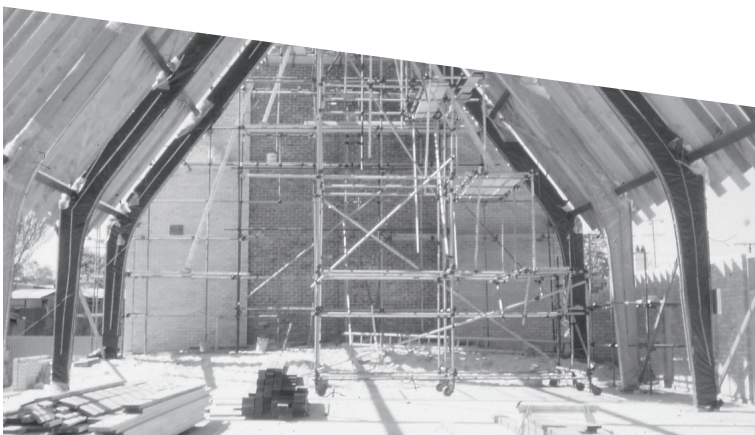
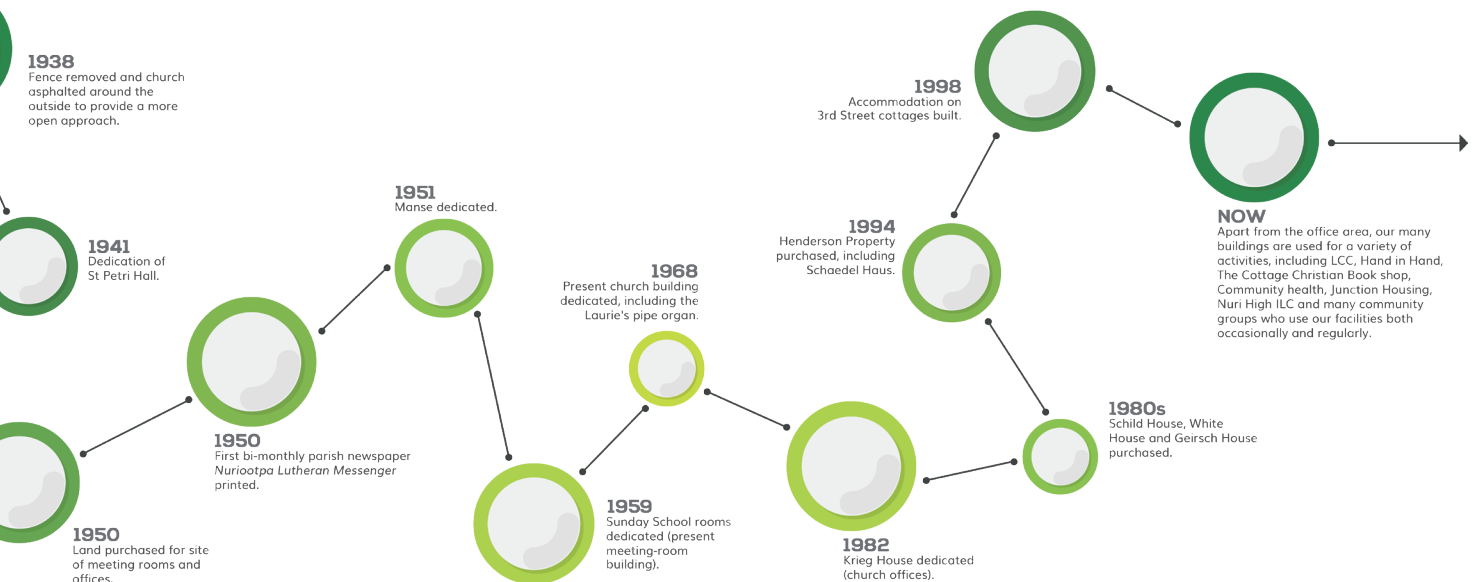
PLANTED FOR LIFE

THE BUILDINGS



**"THE TRANSFORMATION OF MANKIND
INTO A NEW COMMUNITY IS POSSIBLE
ONLY IF MEN ARE AWARE OF THE
DEFICIENCY OF THE OLD."**

Sanctorum Communio



PLANTED FOR LIFE

THE 2017 MINISTRIES AND ASSOCIATED CONNECTIONS

CHILD, YOUTH AND FAMILY

- Messy Church*
- REACT*
- Hand-In-Hand Family Centre*
- Kids Connect*
- Hoot Playgroup Food To Share Team*
- Youth Band*
- Paper Recycling

SCHOOL CONNECTIONS

- Vetamorphis (Faith)*
- Redeemer GC Representation
- ILC (Nuri High)
- Assisting Redeemer P&F
- Involvement with worship at both Redeemer and Faith
- Grand Friends Day

SENIOR MINISTRY

- Wednesday Communion*
- Seniors' Morning Tea*
- Card And Games Afternoons*
- Parish Nurses*
- Card Ministry
- Home Visiting
- Village Worship Programme

ADULT FAITH

- Bible Study*
- Small Groups*
- Branching Out*
- Ladies' Guild*
- Prayer Group*
- Bible Journalism*
- Free-To-Write*
- Library*
- Shalom Singing Group*
- The Cottage*
- Shed Happens

WORSHIP

- 8:30am, 10:30am and 3rd Service Worship*
- Morning Teas*
- Lunches (e.g. Longest Lutheran Lunch)*
- Foundation Gatherings*
- Music Group/Bands*
- Organists*
- Flower Arrangers*
- Communion Assistants*
- Baptisms*
- Weddings*
- Funerals*
- Audio Visual Teams*

OTHER

- St Petri Governance Council*
- Admin Support Team*
- Ad Hoc Committees (Float, Redevelopment, etc.)*
- Campus Afternoon Teas*
- Breastfeeding Support Group*
- Embroidery Group*
- Bible Society*
- Arty Castle Art*
- Child Youth And Health*
- LCC*
- Carers' Link*
- Junction And Community Housing
- Paper Recycling
- Shoebox Ministry
- ALWS

The items with an asterix are most likely to benefit from the redevelopment of the church campus.

THE REDEVELOPMENT PROPOSAL

The redevelopment proposal is that we proceed with all of Stage 1, Stage 2, and Stage 5 and replace all the pews with chairs.

The Sanctuary and the Gallery will not be altered in this proposal.



NORTHERN EXTENSION

A hall area, new kitchen, BBQ area, storage space, dividers for the hall area to provide for a range of activities at one time, a cafe and casual seating area, an agency of The Cottage, a library area, a new sanctuary area on the South side of the Nave, new toilets, multi-purpose family retreat area, new audio-visual desk with upgraded equipment, easy access to the Hand-in-Hand centre and new chairs to replace the pews (this will enable the church to work both ways for differing events).



SOUTHERN EXTENSION

Reception area, interview room, offices to cater for current staff plus extra pastors (depending on realignment) and additional future staff, volunteer work area, flower room/staff room, vestry, board room, strong room and staff toilet.



DROP-OFF ZONE

The drop-off zone at the front of the church will provide for hearses for funerals, stretch limos for weddings, and to enable people to be dropped off and collected safely as needed.



PLANTED FOR LIFE

THE PEOPLE OF OUR COMMUNITY

THE POPULATION

NURIOOTPA



6,500
approx

2.6% growth since last census

NURIOOTPA, STOCKWELL AND DISTRICTS



7,500
approx

(Nine congregations)

AGED CARE COMMUNITIES

- ➔ Barossa Village
- ➔ The Vines
- ➔ Proposed 50 independent units for Tanunda Lutheran Homes at Schaedel Street

OTHER WORSHIPPING COMMUNITIES

- ➔ Anglican
- ➔ Catholic
- ➔ Impact
- ➔ Uniting
- ➔ At least two other home/community groups

ST PETRI CONGREGATION

AS AT MAY 2017

WORSHIPPING COMMUNICANT MEMBERS AGED 18+



344

WORSHIPPING NON-COMMUNICANT MEMBERS AGED 18+



99

WORSHIPPING AGE GROUPS

0 to 18	76
19 to 30	51
31 to 59	124
60 to 100	268
	519

(7.9% of Nuriootpa's population)

SCHOOL COMMUNITIES

Redeemer Lutheran School

approx. **400 students**

250 families

Faith Lutheran College

approx. **600 students**

350 families

Nuriootpa High School

approx. **1000 students**

550 families

Nuriootpa Primary School

approx. **350 students**

200 families

Nuriootpa Kindergarten

approx. **70 students**


70 families

2420

students

1420

families



A REDESIGNED BUILDING WILL HELP IN REALISING OUR VISION

We believe reshaping our church building will help us more fully engage with our local community and give us a greater opportunity to share the love and hope of Jesus with people.

The Community around us is changing. Nuriootpa is growing. Nearly 299 people have made their home in the 5355 postlude area in the last four years. There are people who are looking for a church home and new relationships. In all likelihood growth will continue.

The nature of our town is changing. You can see this happening with the redevelopment of the Co-op and Mitre 10 buildings, and the new vibrancy in the main street. Our church campus is finding itself more and more in the very centre of town. We have a great opportunity to serve people and make the Gospel seen and heard in new ways in the centre of town.

The shape of the eight smaller congregations in our area is changing. We as a larger church have a regional responsibility to support our brothers and sisters in faith when and where we can. We have the opportunity to be of more assistance by providing resources and office space for these congregations.

There is an enormous opportunity to serve among seniors. The Barossa Village, The Vines and now Tanunda Lutheran Homes are expanding in Nuriootpa. *We have the opportunity to work with these organisations to minister to and evangelise seniors and their families.*

We value our schools. With expanded space in our church building we could easily host school worship from both Faith and Redeemer and provide a venue for school activities should the need arise. Nuriootpa High has a large student population and our work with them through the ILC and support of chaplaincy would be enhanced as we provide a facility for various activities.

There are various community groups who currently use our facilities. There are others, such as Barkuma Disability Support services, who would like to base themselves on our campus and use our facilities. Demand is high for appropriate spaces to be used by various government and non-government caring, training and support services.

Nuriootpa currently has no larger well-appointed building for the arts and learning. This reshaped church building would be an excellent and well-priced venue for concerts, recitals and larger seminars.

If we reshape our church building to make it more multi-functioned we will be serving our community and church, and most importantly, the Gospel of Jesus Christ where He has placed us.

OUR MISSION FOCUS

We understand that no local church can do everything all at once. We believe God is calling us to focus on five particular areas of his mission.

FOCUS 1

CHILDREN, YOUTH AND FAMILIES

We live in a local community which has a large number of children. There are around 670 families with children under fifteen in our post-code. They attend the two primary schools and one secondary school within walking distance of our church campus or the only Lutheran secondary school in the Barossa Valley: Faith Lutheran College.

We also serve many local families through our Hand-in-Hand Family Centre and through our support of and partnership with Lutheran Community Care. We want families with children and young people to find life and vitality in the gospel faith among us, and to grow in their own faith and love at St Petri.

SUNDAY MORNING GATHERING

Sunday morning is our 'prime time' in mission and the centre of our communal faith in Christ. It is in the rhythm of liturgy, with its preached Word and sacramental gifts of grace that we receive faith, hope and love for living and bearing witness. We see the need for our Sunday morning gatherings (and gatherings at other times) to be easily accessed by people of all ages and needs.

We strive to be a local church who truly welcomes the stranger among us in every possible way. We see the need for Sunday mornings to include more than two worship Services, but also fellowship time, teaching of scripture and pastoral care.

FOCUS 2

ADULT FAITH FORMATION

We know that people long for, enjoy and need faithful biblical teaching. Our Cottage Christian Bookshop aims to satisfy that need. We are committed to a 'life-long learnings' approach to life. As a result, we are committed to listening to people's stories and hosting opportunities for adults to learn and grow. We seek to fulfil Jesus' commission to baptise and teach all people in His name as we listen to His Word and put it into practice together.

FOCUS 3

A part of our adult formation in faith is the smaller group gathering. This focus includes support of our existing groups. This focus also includes the creation of new groups that help make our larger church smaller to suit all kinds of people.

MINISTRY WITH SENIORS

Our seniors are vitally active in our minion. We have learnt that many seniors live alone and appreciate support and friendship. There are around 730 seniors living alone in our postlude. The largest concentration of single seniors live within walking distance of our church campus.

We see the opportunity to engage and empower our seniors to continue serving in Jesus' name.

FOCUS
4

SCHOOL CONNECTIONS

Schools are places of community and learning. We want to serve our schools (Lutheran and Government) as we foster deeper relationships with the three schools close to us and strengthen the relationships we already have with Faith Lutheran College.

We are aware that the school with whom we have direct link and responsibility is Redeemer. With other supporting congregations, we want to serve the Redeemer community as we support staff and families, in the sure hope that the Spirit will do his gospel work, and people will experience the love and acceptance of Jesus.

FOCUS
5



OUR TARGET AND WAYS TO GIVE

OUR GOAL:
\$2,500,000

A little becomes a lot by everyone being committed to respond to this challenge.

Alongside a **once-off gift**, each of us can sacrifice more than we think if we give over a 3-to-5 year period.



We already have over **\$400,000** in reserve funds and are debt free.



We hope that **generous one-off foundation gifts** will raise **\$200,000+**.

Should we achieve this, we would require a loan from the LLL of **\$1,900,000** at a 5% interest rate over 15 years.

This would require a repayment of \$190,000 per annum and matching deposits with the LLL of \$1,900,000.

HOW WE CAN ACHIEVE REPAYMENTS

Repayment could be achieved by considering these examples of sacrificial giving:

AVERAGE GIFT AMOUNT			NUMBER OF GIVERS	TOTAL GIFTS PER ANNUM
WEEKLY	MONTHLY	YEARLY		
\$12	\$52	\$624	300	\$187,200
			350	\$218,400
\$15	\$65	\$780	300	\$234,000
			250	\$273,000

Note: Any surplus giving can be used to pay off extra capital on the loan, thus reducing the interest and paying off the loan earlier.

WAYS TO GIVE

A ONE-OFF FOUNDATION GIFT



A SACRIFICIAL OFFERING

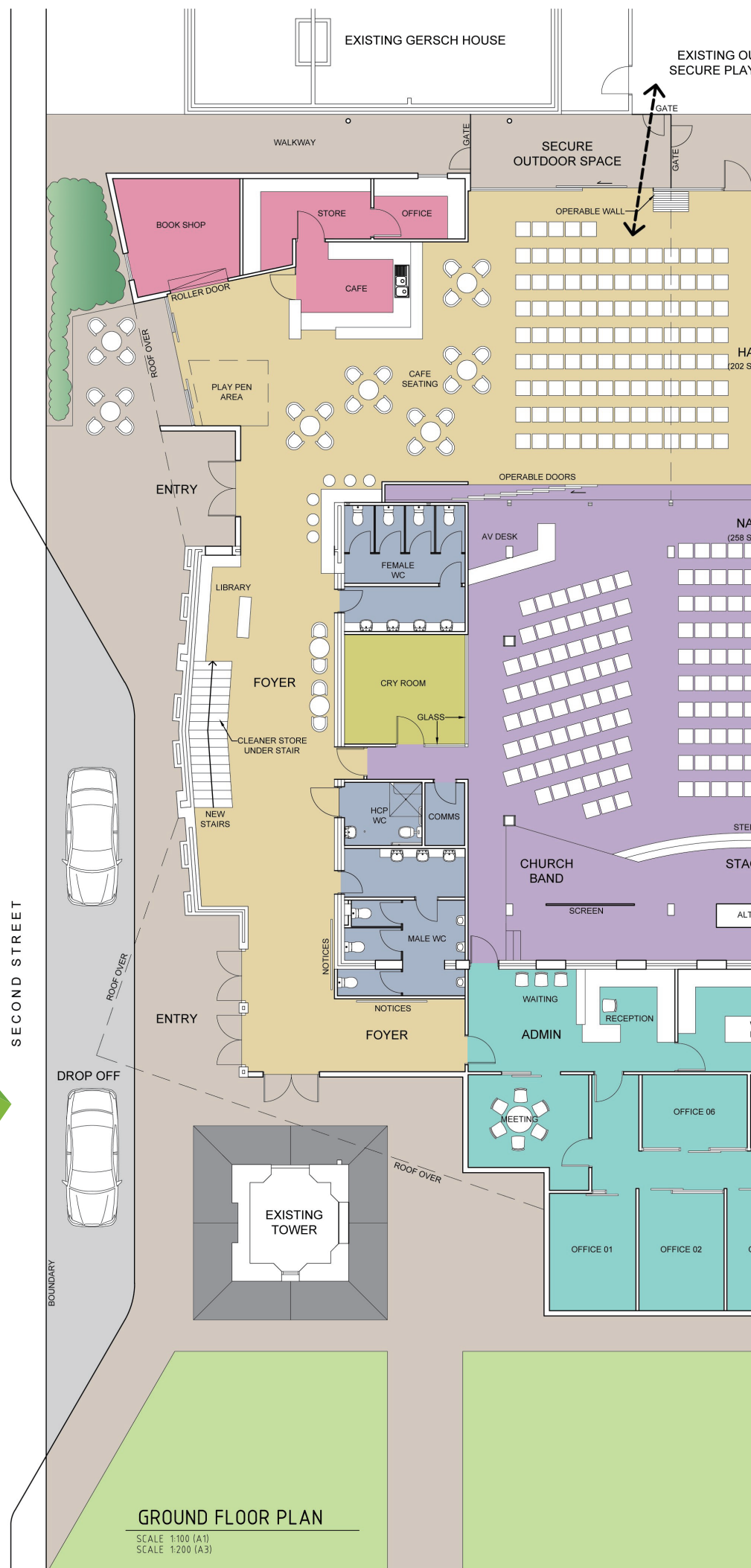
For three to five years in addition to your regular free-will offering.

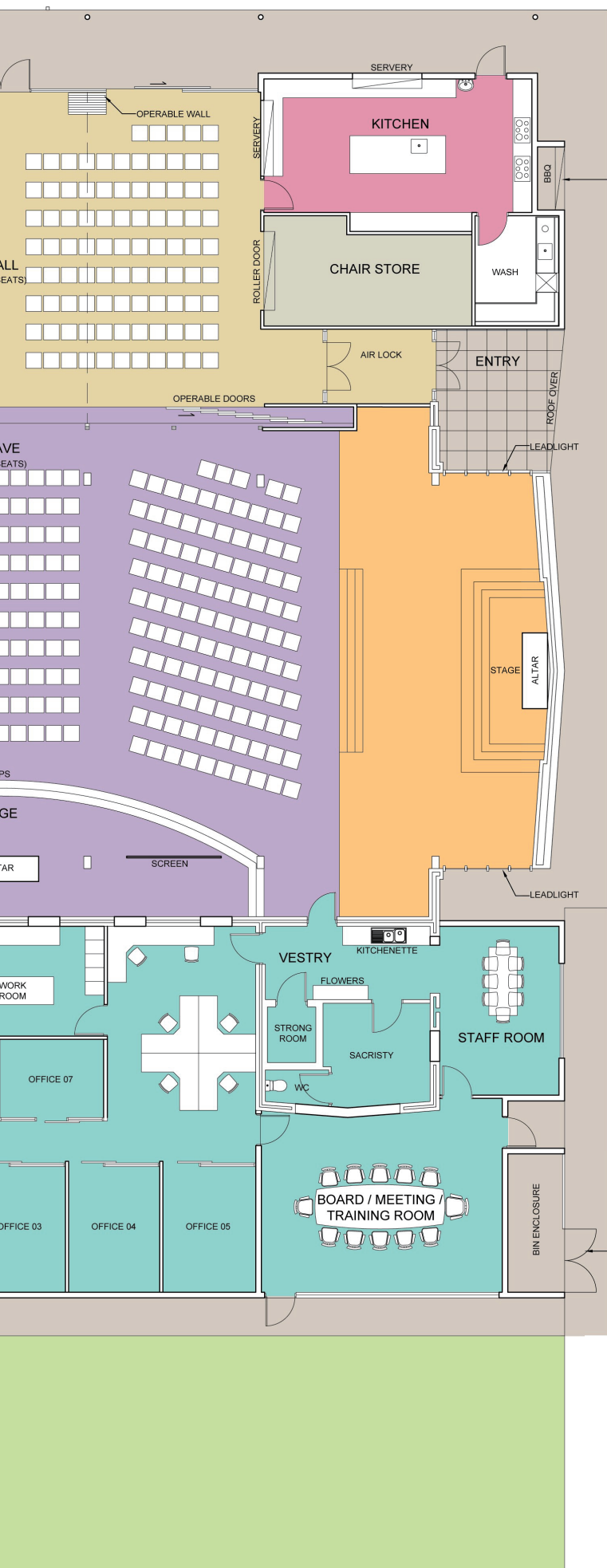
Please see page 23 for more information on ways to give.

For I know the plans I have for you," declares the LORD, "plans to prosper you and not to harm you, plans to give you hope and a future.

JEREMIAH 29:11







KEY UPGRADES AND BENEFITS

CHILD, YOUTH AND FAMILY MINISTRIES

Need an extra family-friendly space that can be provided by our hall and cafe area - linked with Gersch House

LARGE HALL SPACE

Our hall can be anything from an empty social space to additional seating for special worship.

EXPANDING OFFICES

The office spaces will accommodate more of our current people and makes provision for greater sharing in the parish realignment.

EASE-OF-ACCESS

Many of our members will benefit from easier drop-off and entry to the church with the new drop-off zone.

A PIECE OF HISTORY

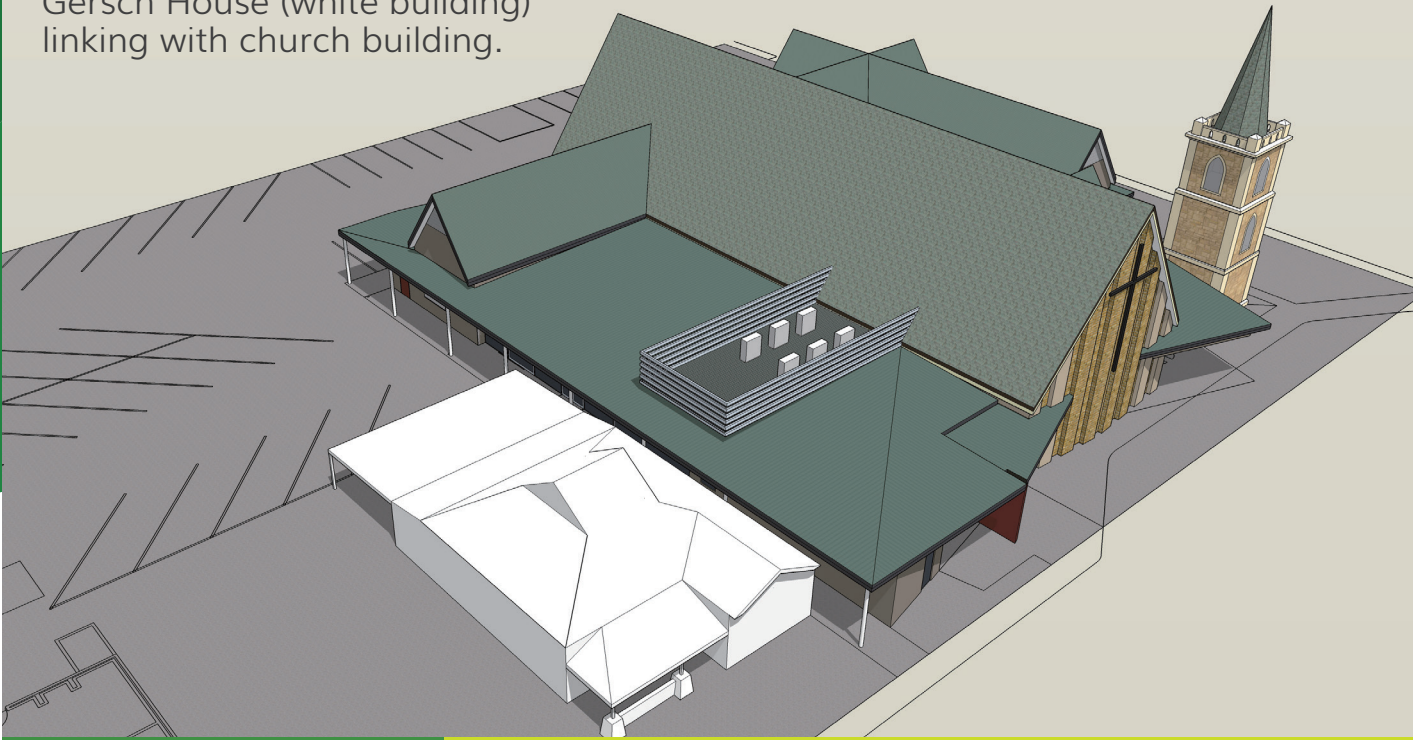
The bell tower will stand independently and marks our progress through time.

VERSATILE WORSHIP

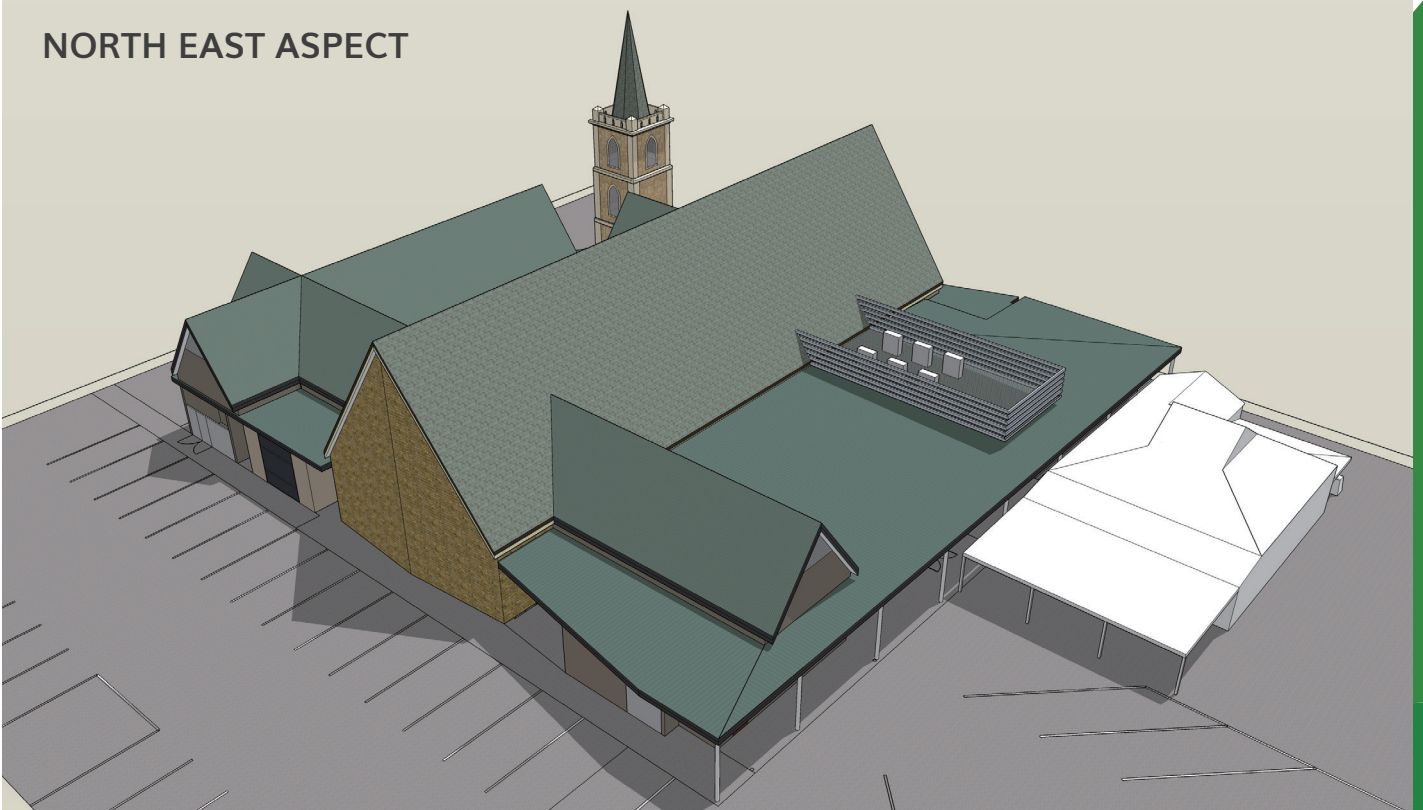
Our new style of church seating gives opportunity for many variations of worship and larger congregational activities.

A LOOK INTO THE FUTURE OF OUR BUILDING

NORTH WEST ASPECT showing Gersch House (white building) linking with church building.



NORTH EAST ASPECT



SOUTH EAST ASPECT



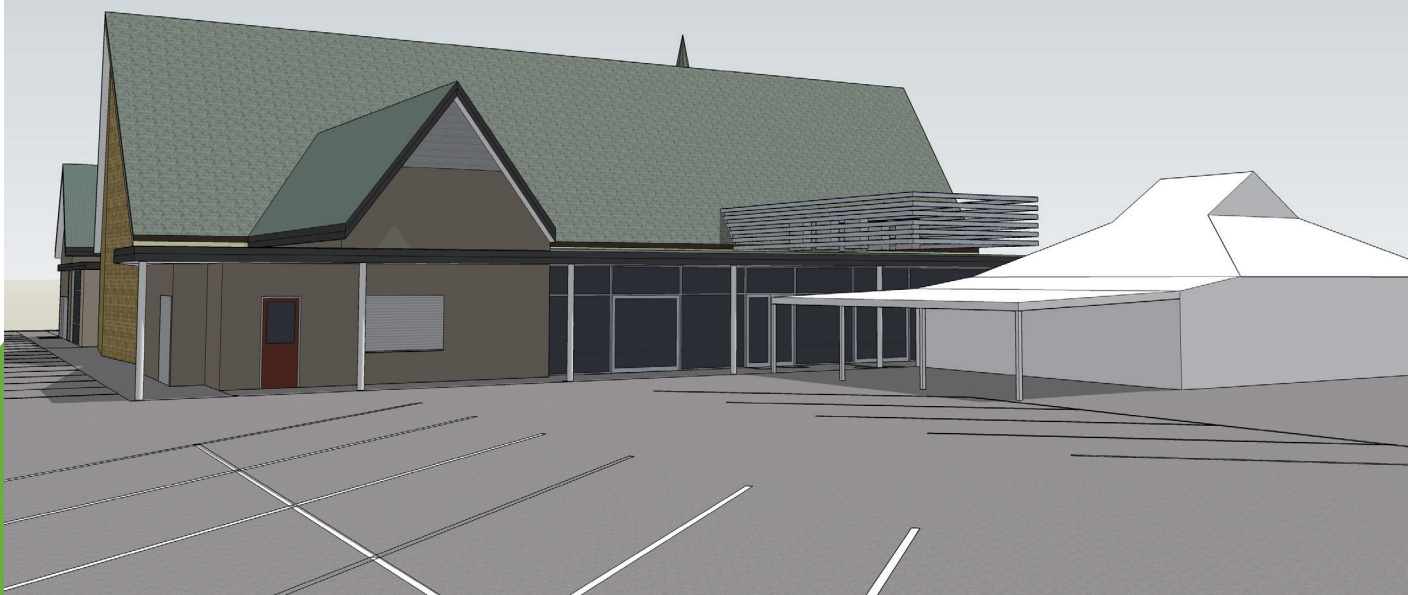
SOUTH EAST ASPECT showing tower as stand out feature.



SOUTHERN ASPECT featuring
extension of vestry area.



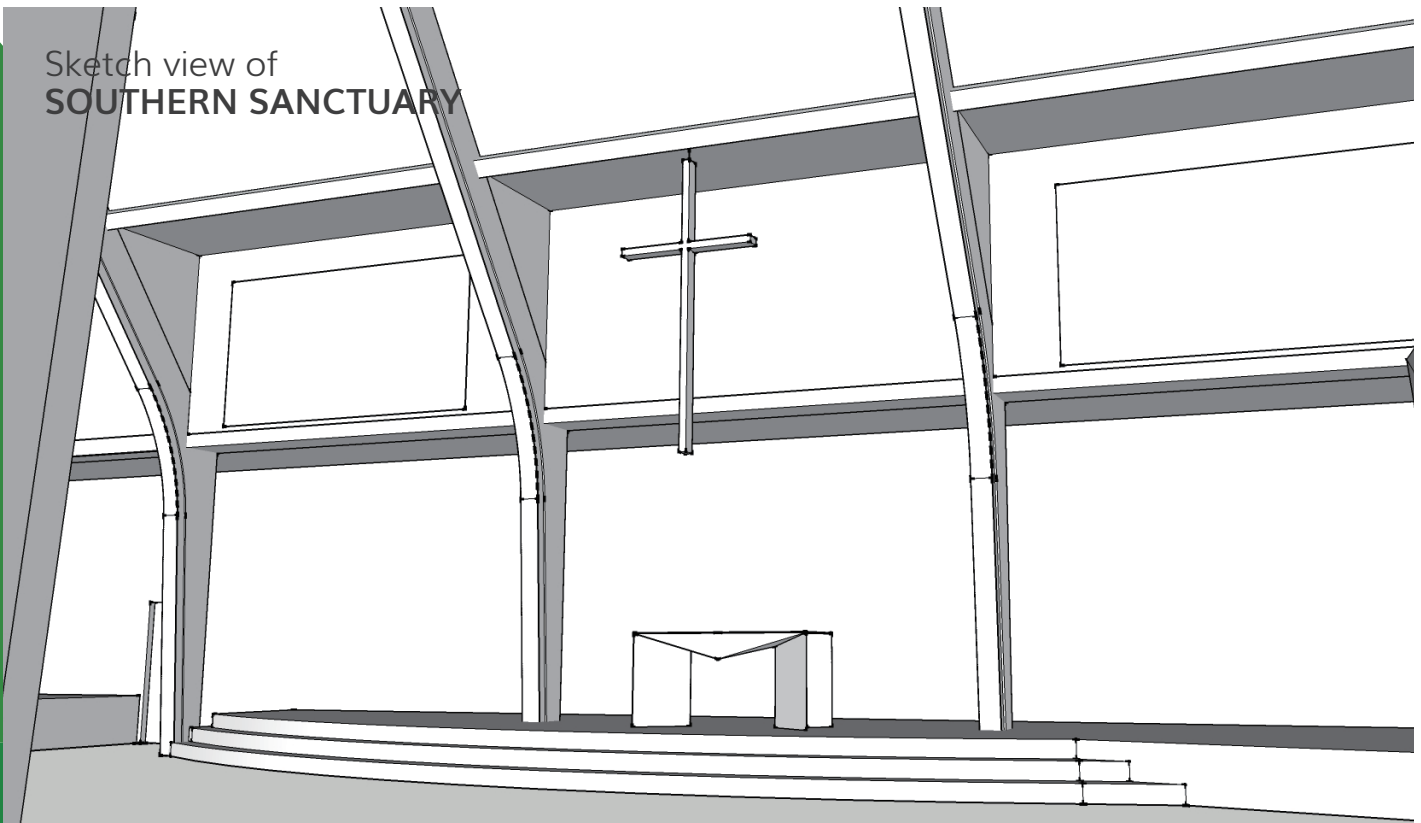
NORTHERN ASPECT featuring
the relationship between Gersch
House and the church.



EASTERN ASPECT



Sketch view of
SOUTHERN SANCTUARY



OUR LIFETIME INVESTMENT

**“THEY FIRST GAVE THEMSELVES
UNRESERVEDLY TO GOD...THE OTHER
GIVING SIMPLY FLOWED OUT OF THE
PURPOSE OF GOD WORKING IN THEIR
LIVES.”**

2 Corinthians 8:5

No project comes without cost and sacrifice, and one as big as this comes with a lot! Only God will bring this project to fruition, but each of us will need to play our part.

The challenge is great, but God is greater and if we work together with each person doing their part, we will see God perform a miracle.

We have a God-given vision and foci for the future of our church. The time is right to bring life to our generation and the ones yet to come. We all have a significant part to play in developing the St Petri story and serving our community.





FREQUENTLY ASKED QUESTIONS



WHY SHOULD WE GIVE?



It is clear in God's Word that regular and special giving is very much part of being a follower of Christ and member of His church. It is also understood in the LCA that the local mission is a priority for congregations. As a local church in Christ's mission, we believe He is calling us to engage in this mission and face the challenges it brings to each of us. It is our responsibility for each one of us to consider our ability to support this project.



HOW DO I KNOW HOW MUCH TO GIVE?



This is a personal decision. In God's Word we are encouraged to give of our first fruits. This means that we are called to give priority to the ministry and mission of our church as we manage our finances. Each of us have very different income levels and can afford to give differing amounts. Even a small amount regularly given is a valued contribution. The biblical guide on regular giving of one's first fruits (tithing) is about 7-10% of one's regular income.



WHO WILL KNOW WHAT I GIVE?



A small team of people will be appointed the task of managing the giving program from across the whole congregation. This will assist in budgeting as well as providing ongoing information and advice to congregational members throughout the duration of the redevelopment. Whenever any questions arise for you in determining your initial and ongoing giving, this team will be available to discuss your choices with you. All personal information will be treated and handled as confidential. The total dollar amounts will be shared but not the individuals who give it.



CAN I GIVE ANONYMOUSLY?



Yes, you can. If choosing to give anonymously you will be asked to speak in confidence with the small giving management team to identify yourself and your decisions about the commitment you are able to make. They will receive this information and feed the financial component to those responsible for the budgeting and financial management of the redevelopment.



WHAT IF MY CIRCUMSTANCES CHANGE AND I NEED TO REVISE MY GIVING PLAN?



It is appreciated that this happens for people as life circumstances vary and it is possible to reassess and revise the amount you are able to give. If you face this situation and are able to increase your giving or you wish to decrease it, you can discuss that in confidence again with the giving management team.



HOW CAN I GIVE FINANCIALLY?



There are several options available and you can choose any number to contribute.



Foundation Gift

This is an option if you wish to make a donation to commence the project. The amount of funds in hand for St Petri at the beginning will reduce the amount of the loan required. As this is not an educational or charitable service, a foundation gift would not be tax deductible as you may have experienced with other projects.



Sacrificial Gift

This is an option if you wish to increase your weekly offering by Regular Eledronic Giving (REG), envelopes or cash in the offering plate. It can be for the duration of the project or for the time you would nominate that suits your own budget and ability to make a commitment. Where an offering of this kind can be made as a commitment for 3-5 years it will be of great assistance for planning the mix of arrangements to fund the development. This could include a decision to sacrifice your tax refund or a portion of it to the project once or over 3-5 years.



Legacy Gift

This is an option where you can include in your will a specific amount of money or a proportion of an estate to go to this redevelopment.



Earmarked LLL Deposit

You can also earmark your LLL account to the St Petri church redevelopment project. This means that instead of paying 7.5% interest on the loan, St Petri only pays 5% on the amount of earmarked funds. This in no way affects the operation of your account. You may deposit and withdraw as you wish. The LLL offers the opportunity for you to pay bills by LLL cheque or direct debit. The interest at the generous current LLL rate is paid on the daily balance of your account.



Interest-Free Deposit With LLL

This is an option if you wish to open a new account or continue an existing account with LLL which operates in the form of a bank account in which you can make deposits, hold funds, withdraw funds, arrange regular payments of bills, etc. In choosing this option you elect to forgo the interest on your account and nominate the church redevelopment project to receive the interest. This is one way of decreasing your taxable income.

FREQUENTLY ASKED QUESTIONS



WHAT WILL HAPPEN TO THE EXISTING HALL AND OTHER BUILDINGS ON THE CHURCH CAMPUS?



It is planned that all existing buildings on the campus will remain for the foreseeable future with the possible exception of Schild House (currently used by LCC). All buildings except the church worship space are currently fully used for most of the week and we are often short of space for regular and one-off activities. St Petri staff and mission programs use all locations.

Many other groups use our campus and pay rent. Lutheran Community Care (LCC) use Schild House and Gersch House (Hand-in-Hand Family Centre), the meeting rooms and ball. They are short of office and program delivery space at times. While they will operate from Gersch House if there is no other option, the premises are not very suitable for private counselling and small group activities.

The Independent Learning Centre (ILC) of Nuri High uses the White House extensively and support agencies working with the ILC are looking for office space on campus. The St Petri administration office supports the current parish and as the parish realignment is being discussed a second parish which might be formed is seeking to have St Petri providing office space and to be a resource centre.

Relocating the existing St Petri administration area will make it possible for our church building to be open to the public every day. It will also allow LCC to have a bigger and more suitable space (existing St Petri main office) to operate from. In turn this would make it possible to demolish Gersch House and improve access and parking on the church site.

Vacating that current administration area would also support the needs of the ILC and some of a second parish. In addition, the new administration area will better serve people of St Petri and a second parish collectively with additional staff and volunteer working spaces, meeting and counselling spaces and a more suitable reception area.



WHAT ABOUT PARKING FOR PEOPLE WITH DISABILITY?



An area of five car parks to the east side of the church will be reserved for people with a disability sticker. People with a disability can also be dropped off and collected at the drop-off zone on the west side of the church, or even at the northern door of the Hall.



WHERE WILL HEARSES GO FOR FUNERALS AND WEDDING CARS FOR WEDDINGS?



The redevelopment provides several options for special vehicles and processional entry/exit for both weddings and funerals. They will be able to park at the front of the church on Second Street with entry possible through both the northern and southern main doors and entering the church via the new hall. They will also be able to park the car park area east of the church with entry at the northern side, or eastern side via the new hall. Hearses will also be able to reverse into the area on the south side currently used for funerals. There will be more weather protection than what is currently provided.





WHY REPLACE PEWS WITH CHAIRS?



There are two key reasons for doing this.

One is flexibility for the arrangement of seating to accommodate gatherings of various sizes and types. It enables some semi-circular seating and variation of width and location of aisles and walkways through the blocks of seating.

Second is for comfort. Over the past years we have discovered that there are considerable numbers of people whose physical needs make it difficult for them to sit on hard pews and who are appreciating the chairs, including chairs with arms which increase mobility. It is also noticeable that we will now be able to seat ten people comfortably in a row of chairs where usually there are no more than eight sitting in a pew of same length.



WHAT WILL HAPPY TO THE PEWS WHEN REPLACED BY CHAIRS?



Many suggestions were made by the 141 people who completed this survey and by others in continuing discussions about the redevelopment. These include:

Giving the pews away (locally or overseas) to a church in need.

Using the pews to create fine church furniture and art. This might include the construction of the new suspended large altar cross, new altar, pulpit and other sacred furnishings as needed. They may also be used for cafe furniture and feature panelled walls in various areas of the building.

Decisions will be made about these possibilities and in consultation with the congregation once the approval for the redevelopment is given.



"YESTERDAY IS GONE. TOMORROW HAS NOT YET COME. WE ONLY HAVE TODAY. LET US BEGIN."

MOTHER TERESA

THE VOTING PROCEDURE



The Vote % Required

The constitution indicates a 2/3 majority of the voting members, at the meeting, would pass a proposal involving this type of expenditure.

Voting Time

A meeting will be held in two parts on the same day: **SUNDAY 22nd OCTOBER.** The first part will be held after the 8:30am service and the second part after the 10:30am service.



Voting Agenda

The meeting will have an Agenda as follows:

- ➡ Welcome and reason for the meeting.
- ➡ Prayer.
- ➡ Putting forward the proposal and asking for movers.
- ➡ Statements for and against the proposal.
- ➡ Voting.
- ➡ Close of meeting.
- ➡ Placing of voting slips in ballot boxes as departing

As there will be limited time for questions and comments about the project at the meeting, an information "table" with members of the Redevelopment committee in attendance will be available for questions following each of the services in the four weeks leading up to voting.



Voting

- ➡ This will be done by secret ballot.
- ➡ Voting slips will be distributed at the entrances to the church building.
- ➡ Members will need to have their names crossed off the role before receiving the voting slip.
- ➡ The voting slip will have the proposal outlined and a Yes/No choice.
- ➡ Voting should be done during the meeting time.
- ➡ The voting slip should be folded once and placed in the ballot box on departure from the church after the meeting.



SUNDAY 22ND OCTOBER

AFTER EACH WORSHIP SERVICE

Counting The Vote

The sealed ballot boxes will be unsealed after the second service and counted by three people not associated with the voting (not members of St Petri). These will probably be executives of the Nurootpa Parish overseen by Pastor Adrian Kitson.



The Result

Members will be able to access the results during the afternoon of **SUNDAY 22nd OCTOBER** on the St Petri web site, or at a special service/gathering that evening at a time to be advised.



stpetri.org.au





StPetri
lutheran church

**21 SECOND ST
NURIOOTPA SA 5355**

(08) 8562 1011

STPETRI.ORG.AU